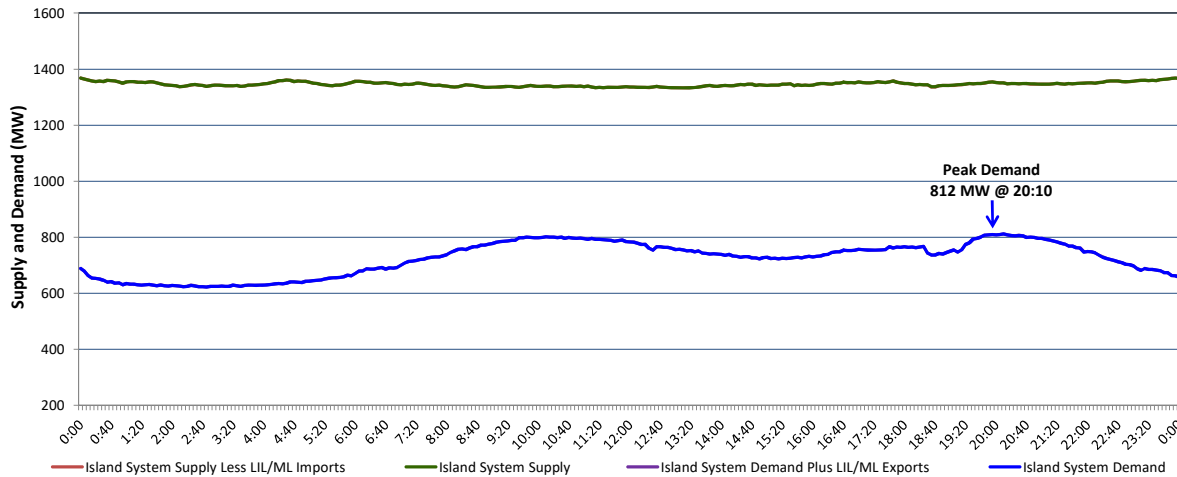


Newfoundland Labrador Hydro (NLH) Supply and Demand Status Report Filed Monday, September 24, 2018

Section 1 Island Interconnected System Supply, Demand & Exports Actual 24 Hour System Performance For Sunday, September 23, 2018



Supply Notes For September 23, 2018 ^{1,2}

- A** As of 0801 hours, July 19, 2018, Holyrood Unit 3 removed from service for economic dispatch 110 MW (150 MW).
- B** As of 1000 hours, July 27, 2018, Holyrood Unit 1 unavailable due to planned outage 88 MW (170 MW).
- C** As of 1609 hours, August 07, 2018, Stephenville Gas Turbine available at 25 MW (50 MW).
- D** As of 1118 hours, August 21, 2018, Holyrood Gas Turbine unavailable due to planned outage (123.5 MW).
- E** As of 1034 hours, September 17, 2018, Bay d'Espoir Unit 4 unavailable due to planned outage (76.5 MW).
- F** As of 2042 hours, September 21, 2018, Holyrood Unit 2 available at 140 MW (170 MW).
- G** As of 2004 hours, September 22, 2018, Bay d'Espoir Unit 3 unavailable due to planned outage (76.5 MW).

Section 2 Island Interconnected Supply and Demand

Mon, Sep 24, 2018	Island System Outlook ³	Seven-Day Forecast	Temperature (°C)		Island System Daily Peak Demand (MW)	
			Morning	Evening	Forecast	Adjusted ⁷
Available Island System Supply: ⁵	1,335 MW	Monday, September 24, 2018	7	7	895	895
NLH Island Generation: ⁴	1,040 MW	Tuesday, September 25, 2018	6	4	985	985
NLH Island Power Purchases: ⁶	120 MW	Wednesday, September 26, 2018	6	10	975	975
Other Island Generation:	175 MW	Thursday, September 27, 2018	14	12	875	875
ML/LIL Imports:	-	Friday, September 28, 2018	12	14	875	875
Current St. John's Temperature & Windchill:	6 N/A °C	Saturday, September 29, 2018	14	14	825	825
7-Day Island Peak Demand Forecast:	985 MW	Sunday, September 30, 2018	10	8	905	905

Supply Notes For September 24, 2018 ³

- Notes:
1. Generation outages for running and corrective maintenance are included. These are not unusual for power system operations. They generally do not impact customer supply. The power system operators schedule outages to system equipment whenever possible to coincide with periods when customer demands are low and sufficient supply reserves are available. However, from time to time equipment outages are necessary and reserves may be impacted.
 2. Due to the Island System having no synchronous connections to the larger North American grid, when there is a sudden loss of large generating units some customer's load must be interrupted for short periods to bring generation output equal to customer demand. This automatic action of power system protection, referred to as under frequency load shedding, is necessary to ensure the integrity and reliability of system equipment. Under frequency events typically occur 5 to 8 times per year on the Island Interconnected System and the resultant customer load interruptions are generally less than 30 minutes.
 3. As of 0800 Hours.
 4. Gross output including station service at Holyrood (24.5 MW) and improved NLH hydraulic output due to water levels (35 MW).
 5. Gross output from all Island sources (including Note 4).
 6. NLH Island Power Purchases include: CBPP Co-Gen, Nalcor Exploits, Rattle Brook, Star Lake, Wind Generation, Vale capacity assistance (when applicable).
 7. Adjusted for CBPP, Vale and Praxair interruptible load, Maritime Link and Labrador-Island Link exports and the impact of voltage reduction, when applicable.

Section 3 Island Peak Demand Information Previous Day Actual Peak and Current Day Forecast Peak

Sun, Sep 23, 2018	Actual Island Peak Demand ⁸	20:10	812 MW
Mon, Sep 24, 2018	Forecast Island Peak Demand		895 MW

- Notes: ⁸ Island Demand / LIL / ML Exports (where applicable) is supplied by NLH generation and purchases, plus generation owned and operated by Newfoundland Power and Corner Brook Pulp & Paper (Deer Lake Power, DLP).